



36B Racecourse Road, Whyalla
Norrie 5608

04327 545 482

Craig.atwelding@bigpond.com

The 3 core values of our
business are:

• **Safety**

• **Integrity**

• **Quality**



Our Vision

Our vision at A1 Welding is to be the best of the best in our specific field for the Iron Triangle. To be the best of the best we will provide quality, reliability, and top end services, providing **YOU** with peace of mind and assurance.

- **SAFETY** within our business is paramount (**A1 Welding, A1 Safety**)
- **INTEGRITY** in keeping our word, we deliver what is promised.
- **QUALITY** within our people, our service, and our product.



Our Company

A1 Welding is a family-owned business who has a vested interest in the town of Whyalla and the surrounding communities, working under the Mining and associated Industry Award and currently employing 25 people with a diverse cultural background and an equal opportunity business which include:

- Management
- Supervisors
- Estimator
- Administration
- Fitters
- Boilermakers
- Welders
- Apprentices
- Trade Assistant

A1 WELDING
ABN: 83 169 802 000
A1 WELDING
ABN: 83 169 802 000



Our Workshop

Our workshop comprises of:

- Guillotine up to 8 mm
- Bender up to 6 mm
- Rollers up to 10 mm
- Bolt hole punch
- Band Saw
- Mig Welding machines
- Tig Welding machines
- Forklift 3T and 7T
- 20T Franna Crane



Many of our employees have additional skill sets enabling A1 Welding to carry out a range of tasks and be self-sufficient in many projects.

- EWP
- Dogging
- Rigging
- Forklift
- Light Truck
- Confined Space Watcher





Our Services

Our operating hours can be from 0600am-1800pm with a 24/7 callout team and 24-hour coverage where required.



We have a work area of 3904m² with 2 x enclosed workshops and 3 phase power.

Workshop Forklifts, Utes and Mine Spec Trucks fitted with Diesel welder, Oxy-Set, Compressor, Plasma, Caddies, and hand tools.

Guillotine, folder, bend rollers, drills, metal saw and much more.



Core Management

Managing Director

Craig Redding- 0427 545 482

Office Manager

Tania Dahlin- 0438 379 455

Operations Manager

Dave Camwell- 0437 538 593

Site Supervisor

John Brooks- 0487 397 773

Cain Hauschild- 0423 819 176

Safety Representative

Gavin Wright- 0421 979 435





Core Capabilities

Our team have years of experience in the Mining/Manufacturing Industry, and our Core Capabilities are as follows:

Shutdown Maintenance:

- Supervision and Leading Hands
- Trades and non-trades:
Boilermakers
Welders
Fitters
Riggers

Trade Assistants with Confined Space watching capabilities.

- Trucks:
Diesel Welding Machine
Plasma Cutter
Air Compressor
Oxy set
Side boxes with tools
(Caddies, rattle guns, sockets, spanners, harnesses etc.)

- Mine Spec Vehicles
- Providing Planning Support:
Assisting with scheduling, task planning and Safety controls
- 24-hour coverage:
Workshop or site
- Mining Shutdowns:
Screen structural repairs
Pump repairs
Tanks and sump fabrication and repairs
Inspections/reporting
Plus, many other tasks.





Structural Fabrication:

- Workshop and Site Welding:
- Aluminium
Stainless Steel
Mild Steel
Roll, bend, and guillotine plates
up to 10 mm
Punch bolt holes

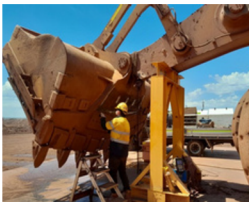


- Qualified to ISO 9606 part 1:
- Allowing shipping and defence structural welding
- Welding Supervisor (3rd Party)
 - NDT with NATA certification (3rd Party)
 - Qualified Welders to AS-3992 and AS-1554
 - Boilermakers/Fabricators

Labour hire:

- Supervisors
- Project Controllers
- Trades with various tickets and licenses
- Non-Trades with various licenses
- Confined Space Watchers
- Shift work.





Dave Camwell
Operations Manager
A1 Welding, A1 Safety
0437 538 593